

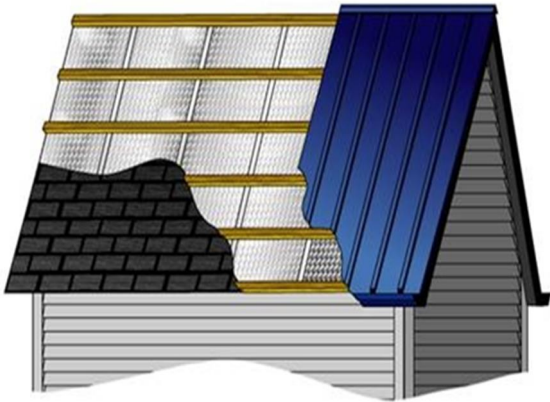
Reflective Insulation

Residential

New Construction / Re-Roofing



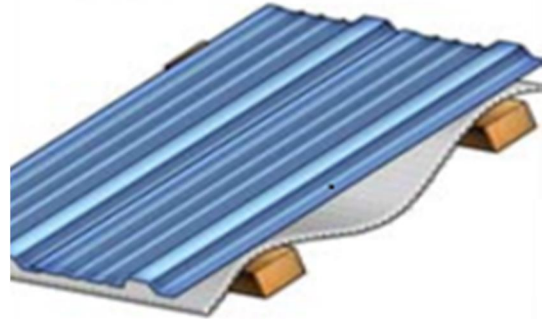
- Double Bubble—48" w , Lath—every 24" on center
- Foil Facing sky, place directly over shingles
- Lap seam with lath, otherwise use tape if done like illustration below



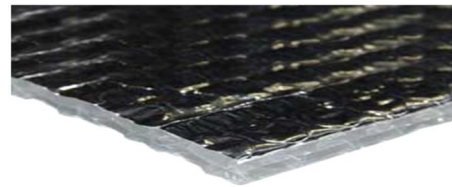
Pole Buildings

Agricultural/Garage

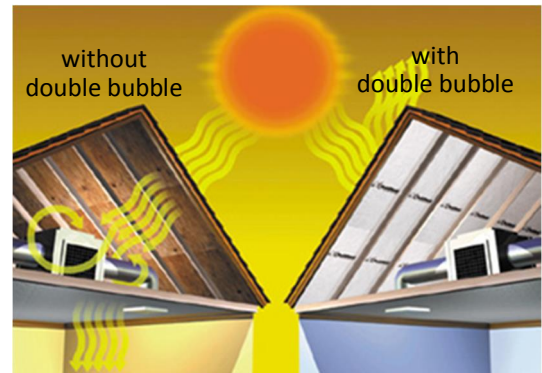
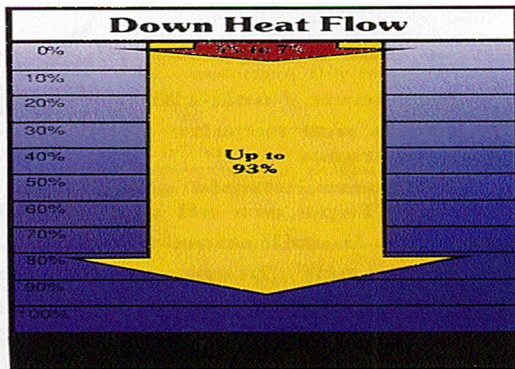
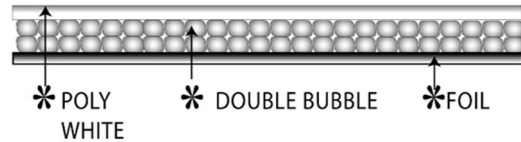
Over Purlins



- Must drape over purlins, must have air gap between metal and bubble insulation
- Run bubble insulation parallel with metal roofing, foil facing sky



500 sq. ft./ roll—5/16x48"x125'



Double bubble will help reduce downward radiant heat flow and help prevent condensation from building up on the interior metal roof surface. Reduce peak summer attic temperatures by up to 40 deg. F with double bubble radiant barrier insulation along with proper ventilation from eave vents and gable vents.